



FARMHOUSE

LASALLE

Evoking the charm of Bucks County, this two-to-three bedroom boasts intriguing architectural features that make it an extraordinary and delightful place to call home. Formal living and dining rooms are separated by a spacious vestibule. The informal family room looks out onto a sizeable covered deck accessible from a breakfast room with bay window. To make things even cozier, both the family and dining areas share a two-sided fireplace. Convenient to all these gathering places is the downstairs powder room, located off the corridor. A separate downstairs laundry room is accessible from the foyer and also serves as a "mud room" entry from the garage.



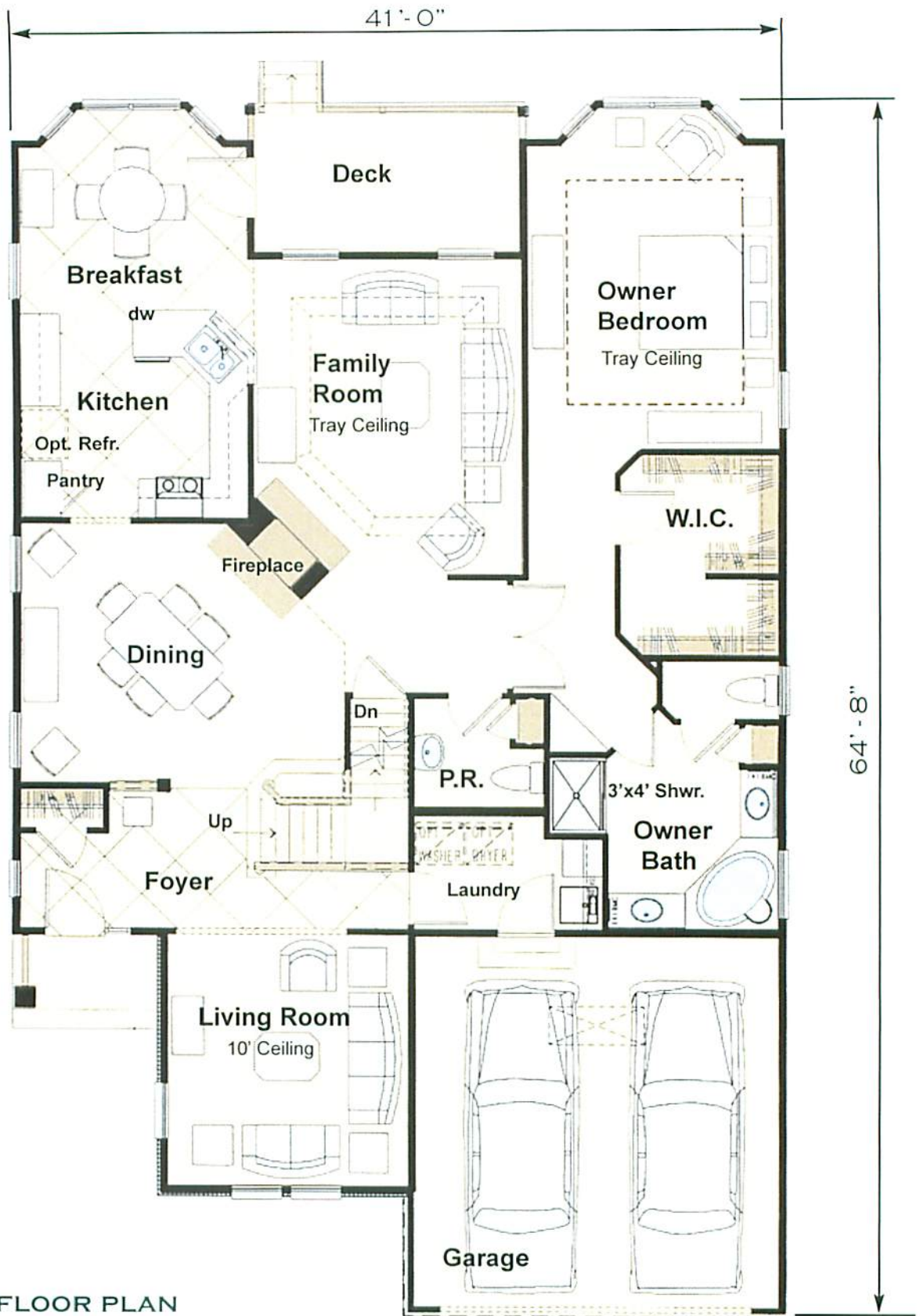
REAR ELEVATION

Downstairs, the owners' bedroom suite, complete with cathedral ceiling and bay window, features its own walk-in closet and full bath with lavish alcove Whirlpool tub, shower and dual wash basins. Upstairs is a second bedroom, full bath and a loft that can either serve as a third bedroom or home office.

The LaSalle is offered in three elevations -- the farmhouse, the manor and the traditional. Each includes a two-car garage, full basement and multi-dimensional, multi-gabled exterior design that gives the home an aura of distinction and grace.

DELUCA

HOMES



FIRST FLOOR PLAN

Preliminary floor plans. All dimensions are approximate. The seller reserves the right to change and/or alter materials, specifications, features, dimensions, designs, landscaping and prices without notice. Landscaping is provided in the front yard only. Placement or "hand" of house, elevations of the house and the electrical service location shall all be the sole discretion of Seller. Oral representations cannot be relied upon as correctly stating the representations of the seller. Refer to the contract and the other homeowner documents for correct representations. **Note:** Furniture and built-ins shown are not included. Consult with Sales Personnel for listed upgrades and packages.

© DELUCA HOMES 2000

Second Floor:	496 S.F.
First Floor:	1,864 S.F.
Total Area:	2,360 S.F.
Garage:	394 S.F.

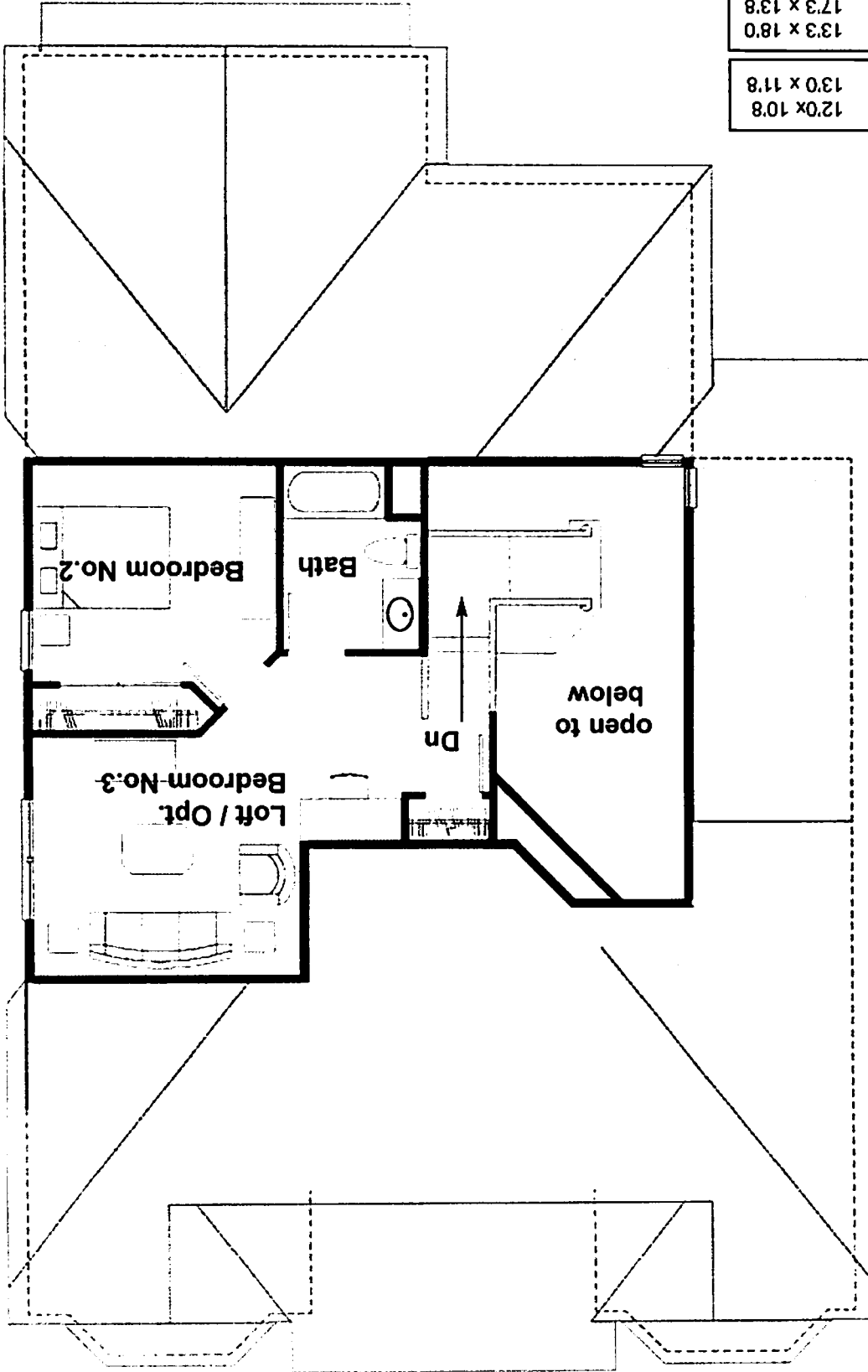


TRADITIONAL



MANOR

SECOND FLOOR PLAN



Bedroom No. 2	12'0" x 10'8"
Loft	13'0" x 11'8"

Owner Bedroom	13'3" x 18'0"
Dining Room	17'3" x 13'8"
Kitchen	12'0" x 10'6"
Living Room	12'8" x 13'4"
Family Room	14'4" x 16'6"
Breakfast	13'0" x 10'8"
Garage	19'2" x 19'8"
Deck	14'4" x 7'8"