



FARMHOUSE

RUTGERS

From the moment one steps from the arched portico into the inviting foyer of the Rutgers, it is evident that this is an exceptionally designed, finely detailed ranch home. Just off the entry, a cozy living room flows into the dining room, an elegant space highlighted by a tray ceiling.

The Rutgers' kitchen makes day-to-day cooking and entertaining efficient and enjoyable with its angled workspace, counter seating and breakfast area. Long lines of sight extend naturally into the great room, which showcases an angled fireplace, tray ceiling and sliding glass doors leading to a covered deck.



REAR ELEVATION

Complementing this flowing public space is the gracious "private" quarters of the home. The magnificent owners' bedroom suite, also capped by a dramatic tray ceiling, is located just off the great room. This sumptuous retreat includes two large walk-in closets, a fabulous bath with a whirlpool tub, separate stall shower, and his and her vanities. Just beyond the centrally located second bath, another bedroom is perfect for overnight guests, a home office, library or hobby room. Completing the allure of this outstanding home is a convenient laundry room, 2-car garage and full concrete poured basement.

DELUCA
HOMES

Preliminary floor plans. All dimensions are approximate. The seller reserves the right to change and/or alter materials, specifications, features, dimensions, designs, landscaping and prices without notice. Landscaping is provided in the front yard only. Placement or "hand" of house, elevations of the house and the electrical service location shall all be the sole discretion of Seller. Oral representations cannot be relied upon as correctly stating the representations of the seller. Refer to the contract and the other homeowner documents for correct representations. Note: Furniture and built-ins shown are not included. Consult with Sales Personnel for listed upgrades and packages.

RUTGERS- DELUCA HOMES

© DELUCA HOMES 2000

Owner Bedroom	16'0 x 17'4
Bedroom No.2	11'0 x 13'0
Dining Room	17'6 x 11'6
Kitchen	12'10 x 14'3
Living Room	13'4 x 10'10
Family Room	19'0 x 17'4
Garage	19'10 x 20'8
Basement	40' 0 x 64'0
Deck	18'0 x 8'0

With Basement

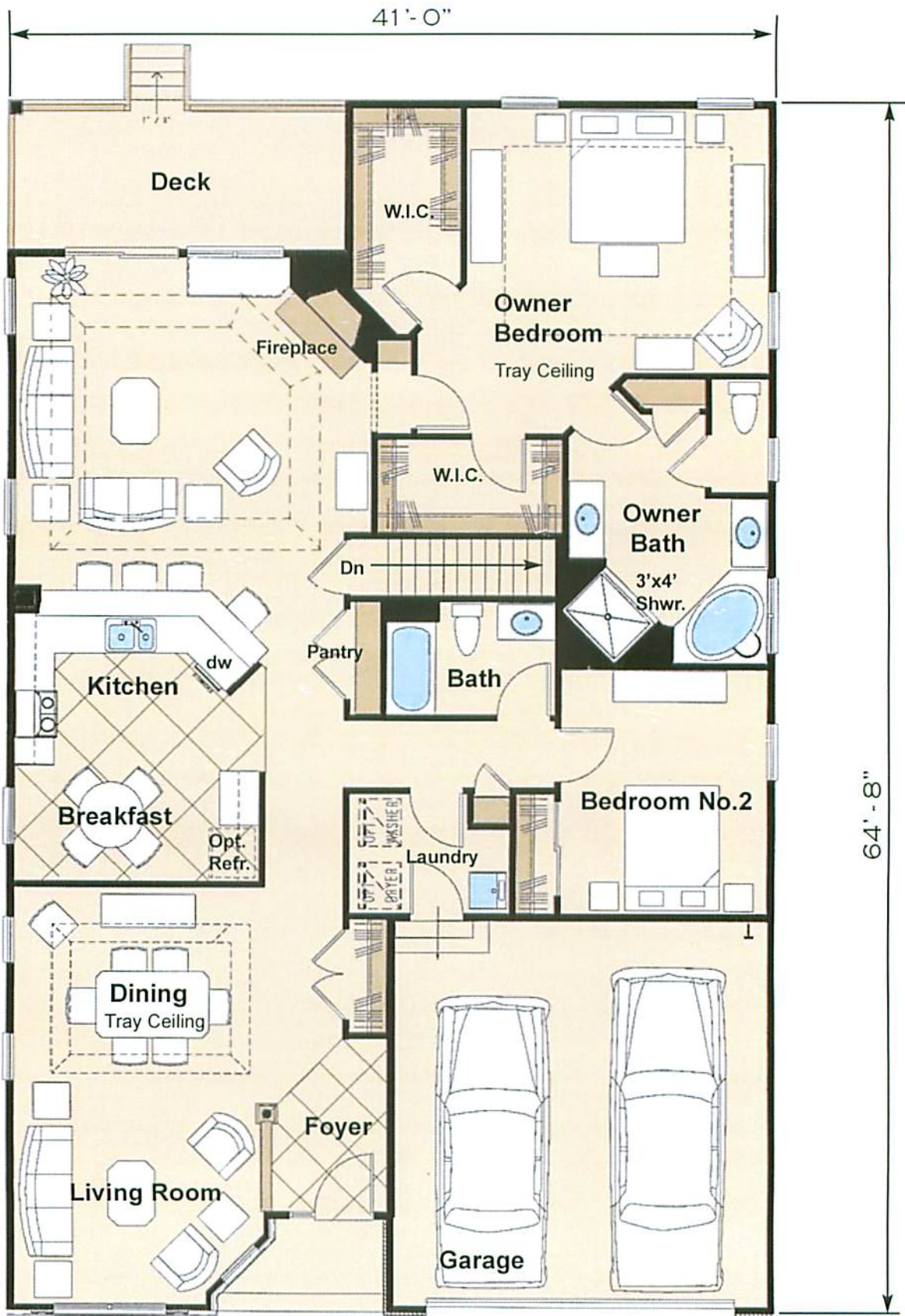
First Floor:	2,014 S.F.
Total Area:	2,014 S.F.
Garage:	416 S.F.



TRADITIONAL



MANOR



FIRST FLOOR PLAN

WITH BASEMENT