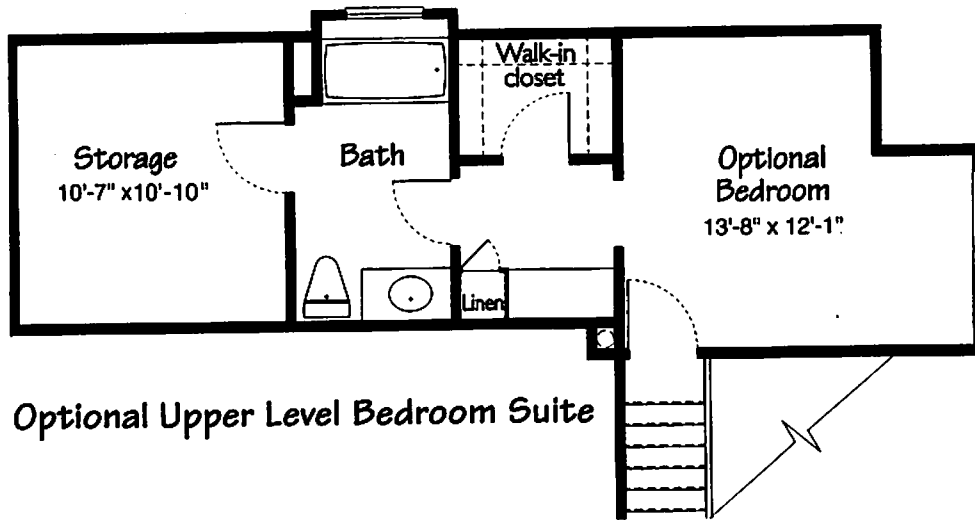
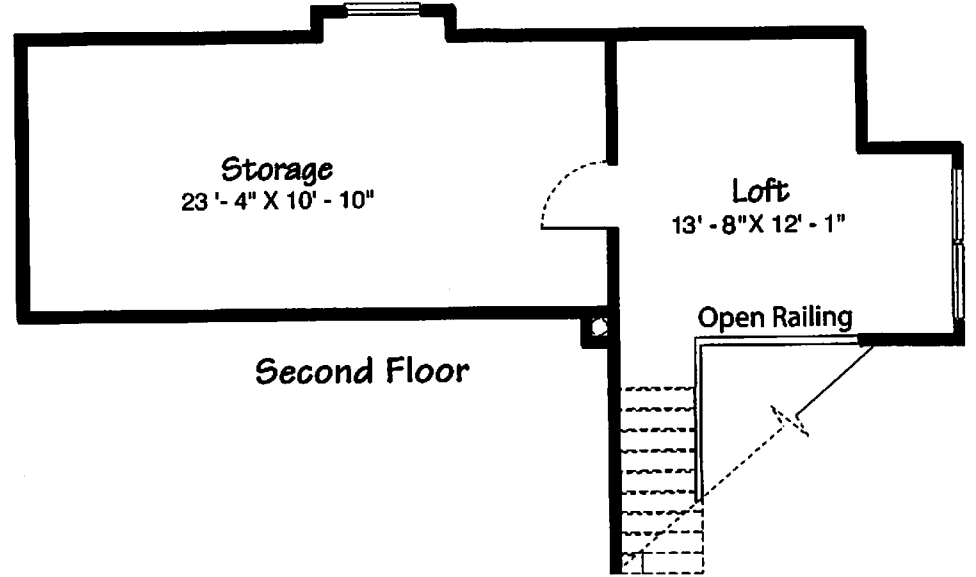
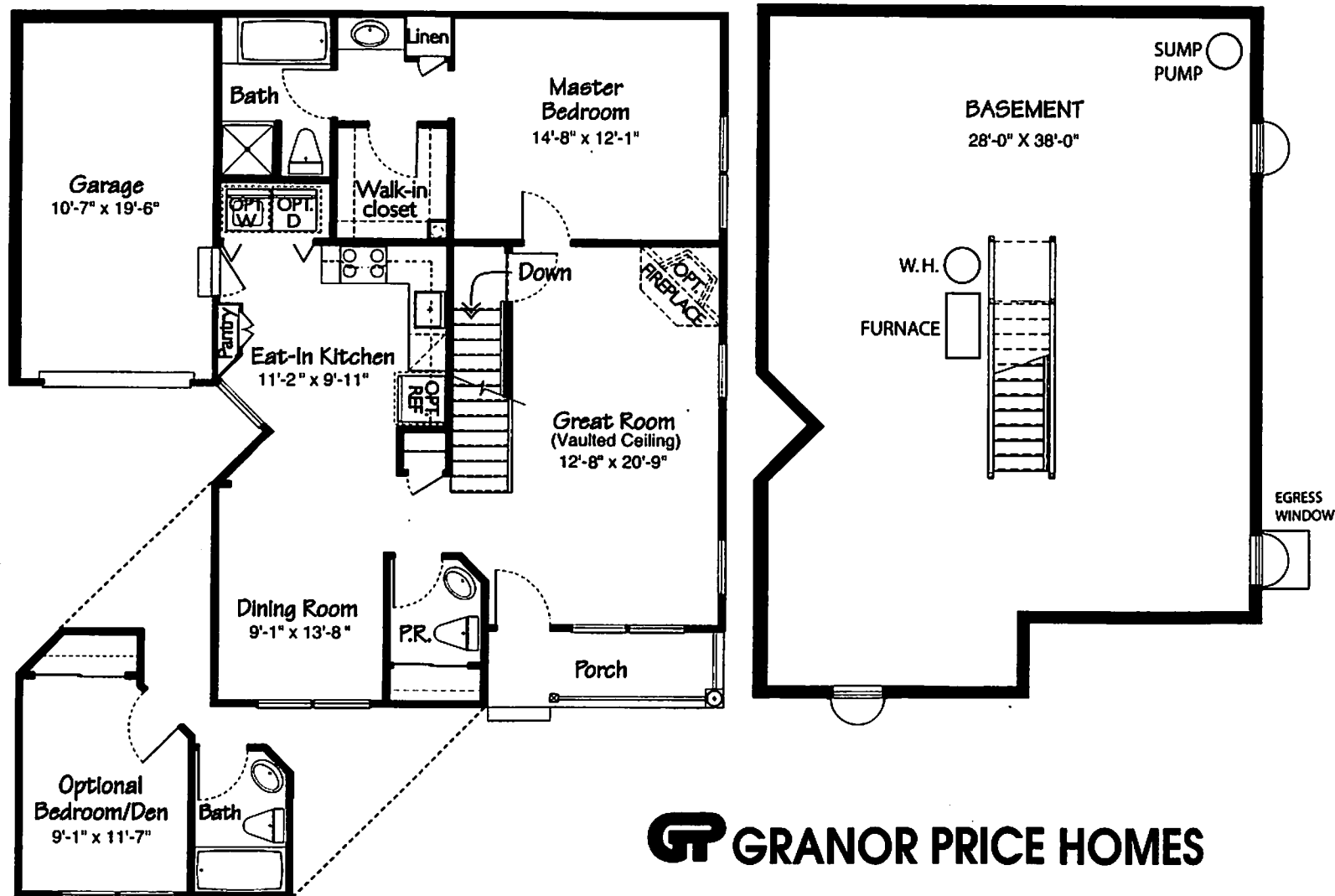


THE VILLAS
at
Chancellor's Glen



The Twin Floor Plan



Optional 1st Floor Bedroom/Den

GRANOR PRICE HOMES

In an attempt to continuously improve our homes, products and features may vary from this brochure or our models. Room dimensions may vary due to field conditions.

The Villas At Chancellor's Glen Twin Features

General Interior

- Vaulted ceiling (Great Room)
- 9' kitchen ceiling
- Hardwood entry
- Plush wall-to-wall carpeting in choice of colors
- Deluxe 7/16" 6 pound re-bond padding
- 21st century wiring package
- Pre-wired for cable TV in living room and all bedrooms
- Pre-wired for garage door opener
- Pre-wired for telephone in kitchen and all bedrooms
- Ceiling outlet and switch in all bedrooms
- Vinyl coated wire rack closet system
- Colonial style 6-panel doors
- Stained oak railings and balusters

Eat-In Kitchen

- Pantry
- 42" high oak wall cabinets
- GE gas range with self-cleaning oven
- GE dishwasher
- GE spacesaver microwave with ductless hood
- Garbage disposal
- Water line for refrigerator
- Ceiling exhaust fan vented to outside
- Stainless steel sink with single lever faucet
- Laminate counter tops in choice of colors
- No-wax vinyl floor in choice of patterns

Powder Room

- Pedestal sink
- No-wax vinyl floor in choice of patterns
- Mirrored medicine cabinet
- Storage closet

Master Bedroom Suite

- Walk-in closet

Master Bath with:

- Bath tub
- Separate shower
- Cultured marble vanity top
- Oak cabinetry vanity base
- No-wax vinyl floor in choice of patterns
- Mirrored medicine cabinet with extra wide mirror over vanity

Exterior

- Professionally maintained landscaping
- Vinyl siding
- Aluminum gutters and downspouts
- 30 year self-sealing fiberglass roof shingles
- Insulated fiberglass entrance door
- Hose bib
- Front electrical outlet

Construction

- One car garage
- Full basement with poured concrete walls
- Waterproofing system with 30 year guarantee
- 200 amp electrical service
- Electric wired smoke detectors on all levels and in all bedrooms
- Washer and dryer hook-ups and vent
- 3/4" tongue and groove sturdifloor decking (glued and nailed)
- Large climate controlled storage area
- Egress basement window (optional in walk-out basement)

Energy Savings

- Solid vinyl insulated windows with screens
- Energy efficient gas heat
- Central air conditioning
- Certified home sealing program
- R-30 ceiling insulation
- R-16 side wall construction
- 50 gallon quick recovery gas water heater
- House wrap

General Information

- Public water and sewer, each home individually metered
- Underground utilities

Warranty

- 10-year PWC (Professional Warranty Corporation) limited warranty

Private Amenities

- A recreation building is provided for exercise, meetings, games and relaxation
- Indoor swimming pool
- Your Community Association provides exterior maintenance of your home and grounds