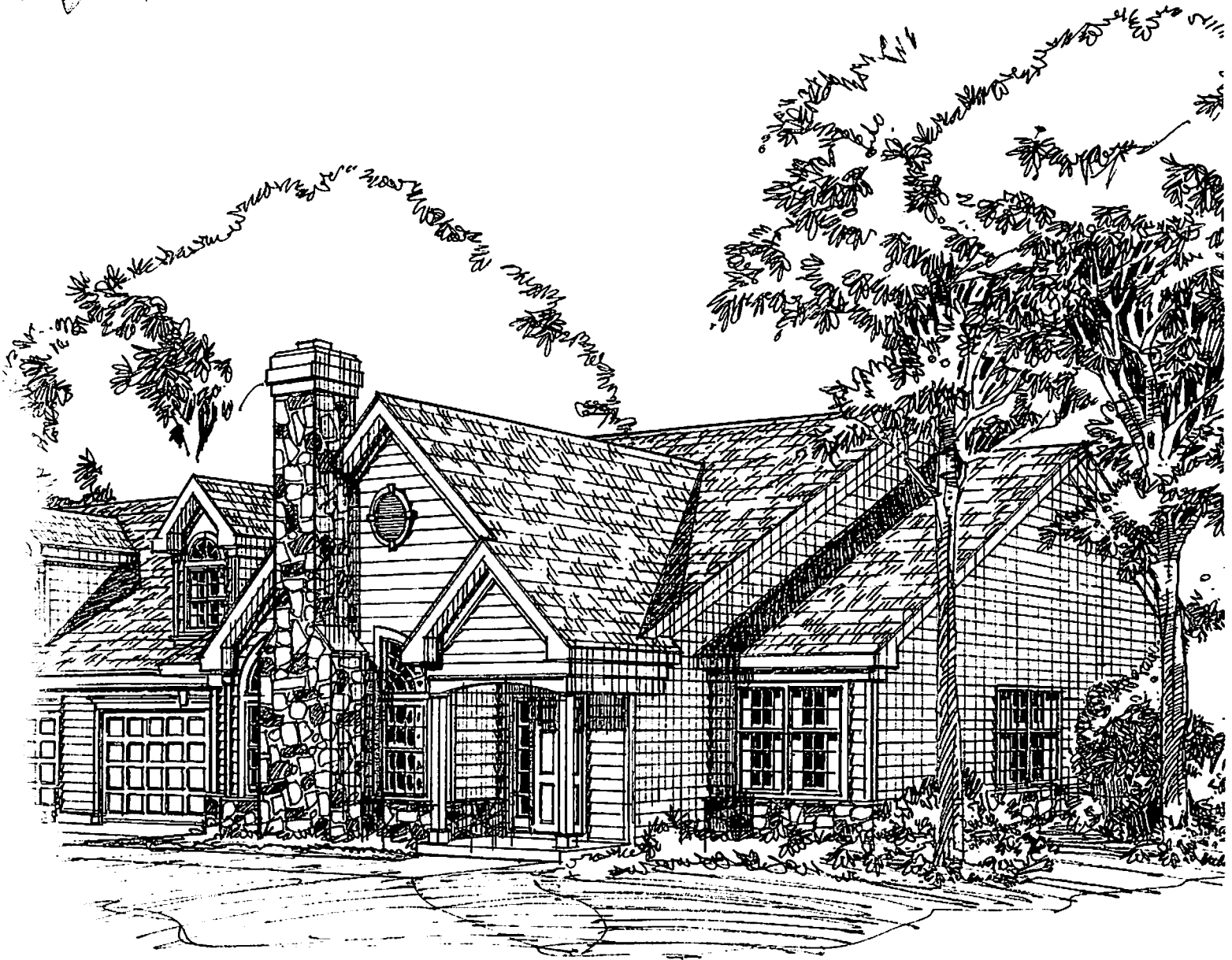


The Mulberry

THE VILLAS



THE VILLAS OF
Flowers Mill

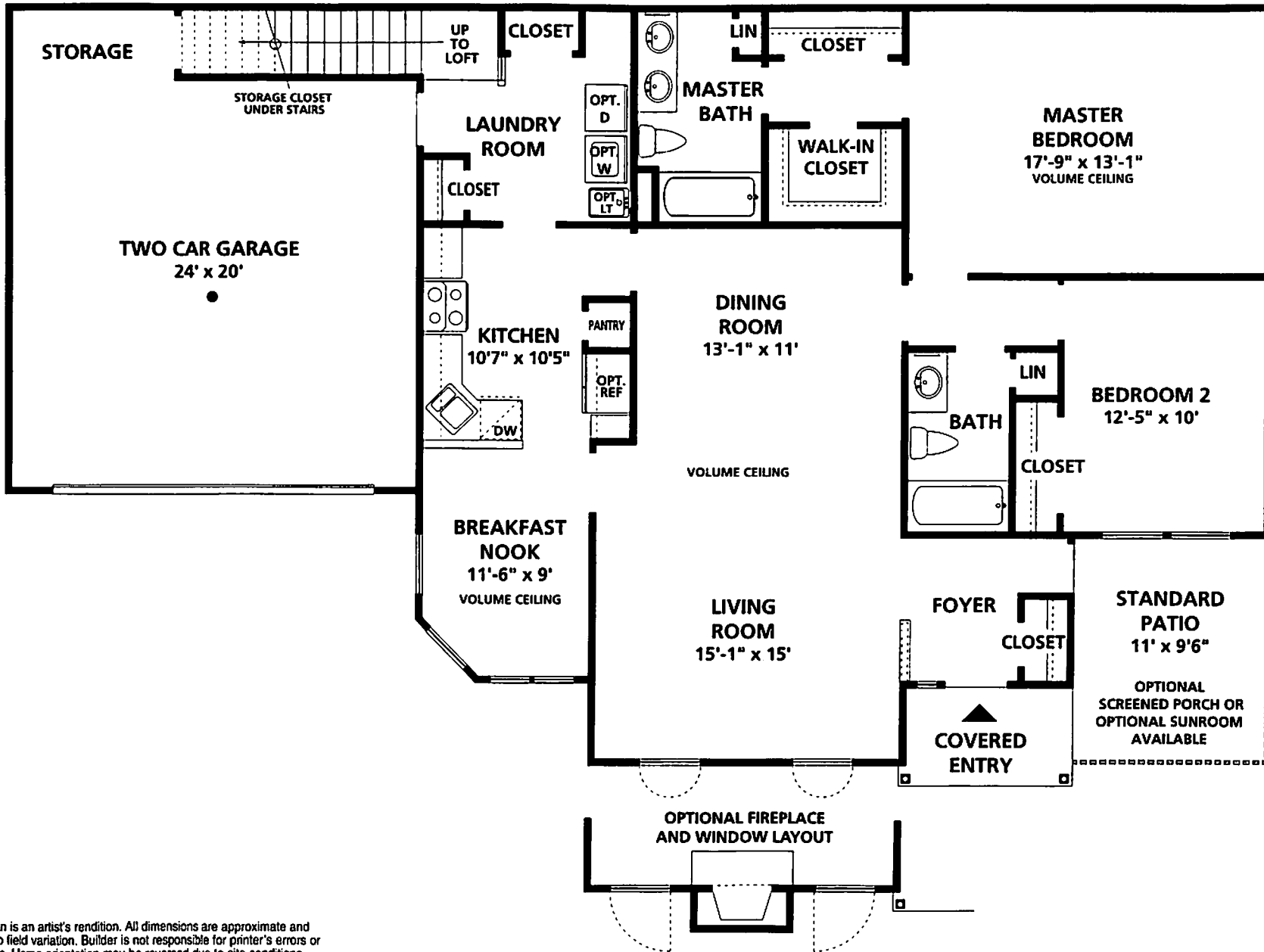


(215) 757-1400

Elevations are artist's renditions. Any dimensions are approximate and subject to field variation. Builder is not responsible for printer's errors or omissions. Home orientation may be reversed due to site conditions.

Elevation shown with optional fireplace.

Copyright © McGRATH HOMES 1999 (VFM 2/99)



Floor Plan is an artist's rendition. All dimensions are approximate and subject to field variation. Builder is not responsible for printer's errors or omissions. Home orientation may be reversed due to site conditions. Copyright © McGRATH HOMES 1999 (VFM 2/99)