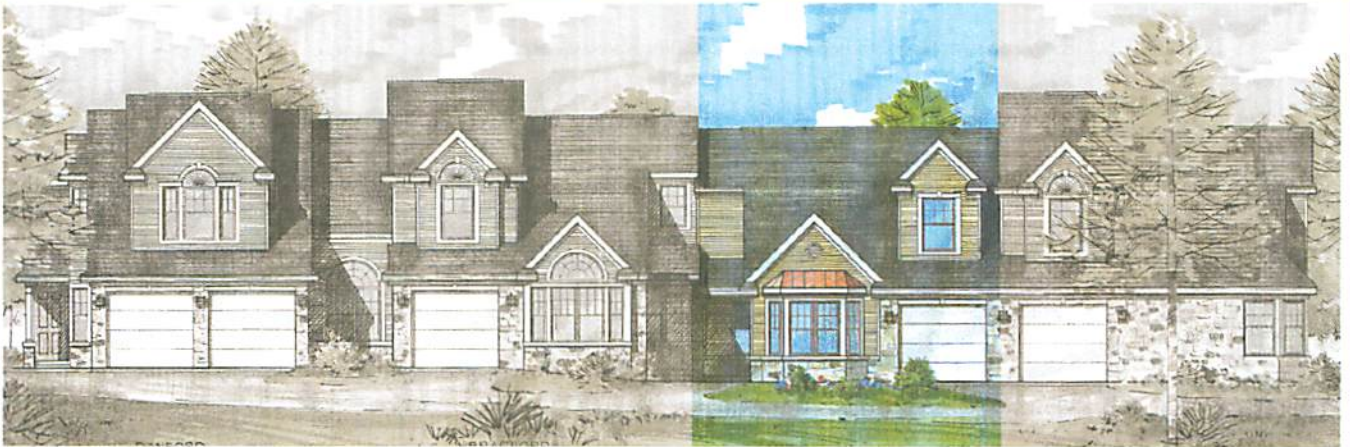


it's the perfect time to discover...

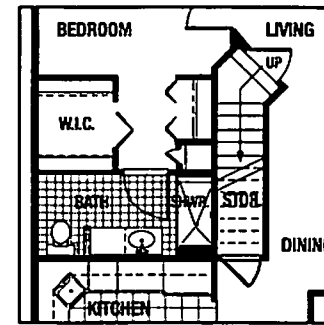
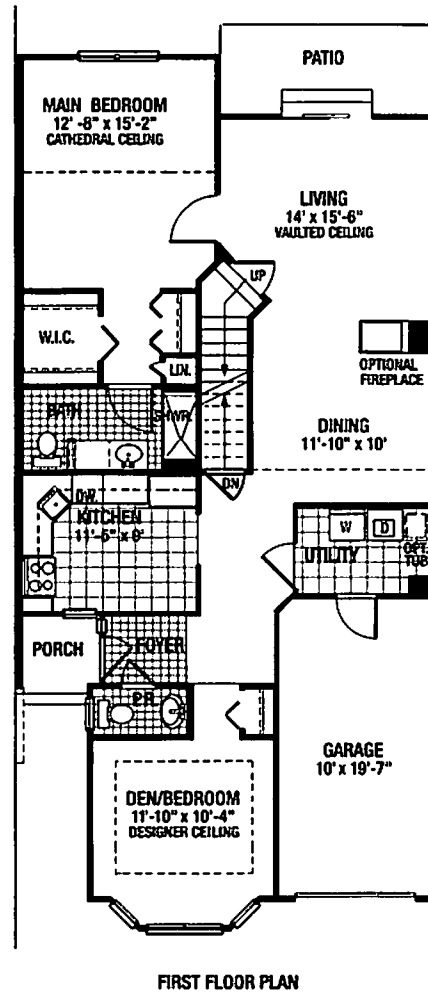
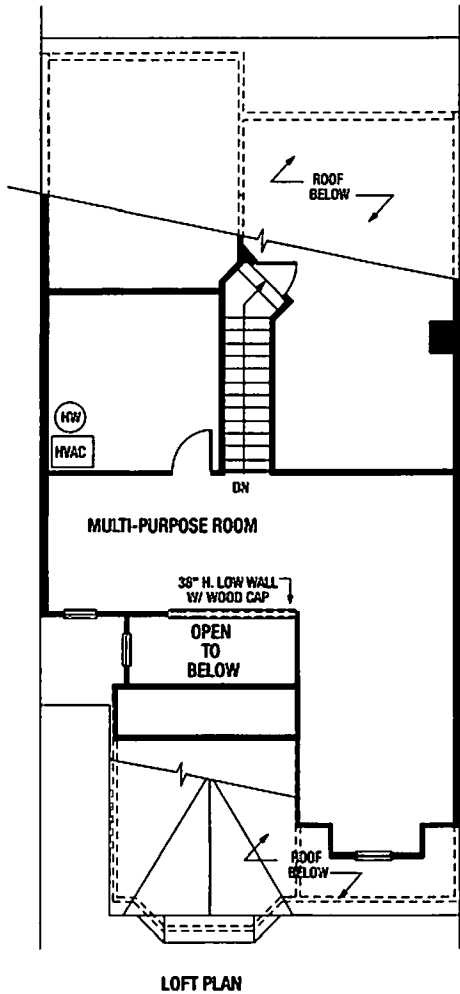
IVYGREENE at Northampton



The Astor

The charming Astor is as beautiful as it is functional. Designed for comfort, convenience and easy entertaining. The Astor's floor plan includes a two story foyer, a flowing living room with vaulted ceiling, a dining room, a gourmet kitchen, den/bedroom with designer ceiling and a main bedroom with cathedral ceiling, walk-in closet and private bath. Completing the first floor is a powder room with lovely pedestal sink, a patio and optional basement. The Astor's second floor will feature a drywall finished multipurpose room.

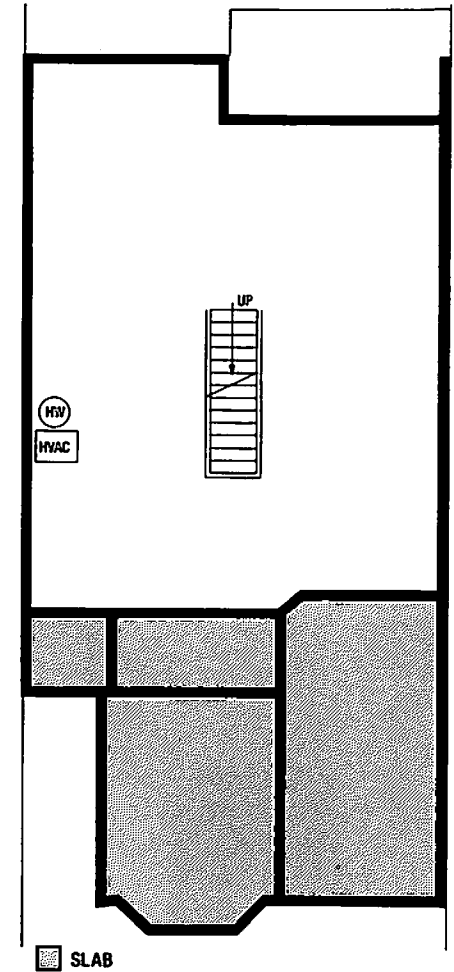
The Astor



Square Footage

1st Floor.....	1220sf
2nd Floor.....	520sf
Total Square Footage	1740sf
with garage add.....	213sf
with basement add....	952sf

Totals are approximate



Elevations and landscaping are artist conceptions only. Contracts take precedence over artwork. Room sizes are approximate and subject to field variations. Floor plans vary slightly with alternate elevations. Contents subject to errors and omissions.