

it's the perfect time to discover...

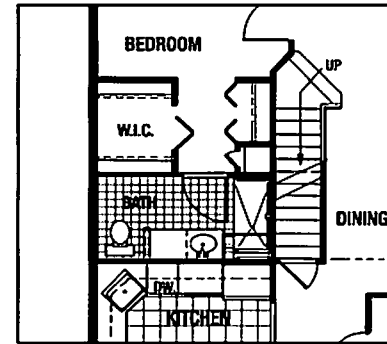
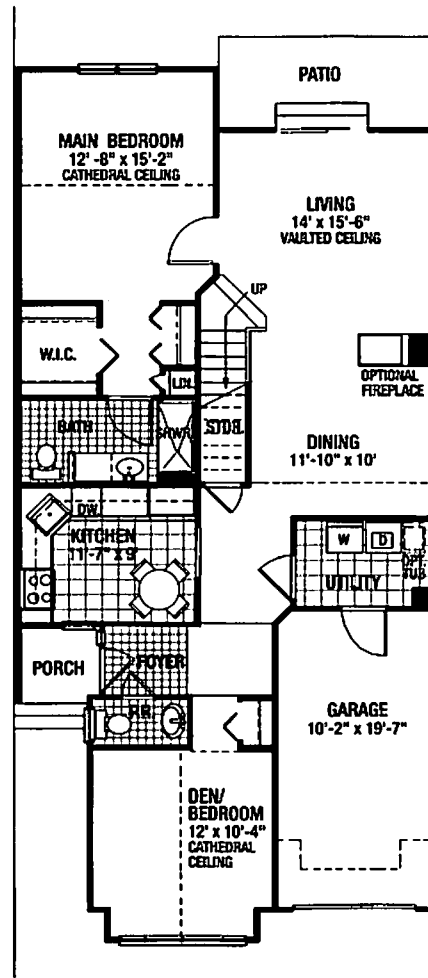
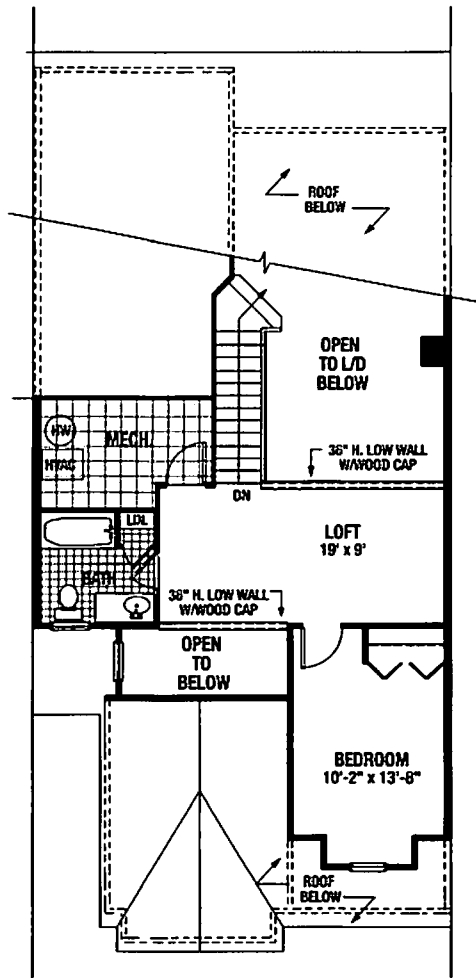
## IVYGREENE at Northampton



### The Bradford

The Bradford Model features generous space and an exciting design with two large bedrooms, full baths, den, powder room including pedestal sink, and loft. The vaulted ceiling living room and dining room provides the perfect setting for entertaining or private relaxation. A cozy fireplace maybe easily added. Amenities include a gourmet kitchen, first floor main bedroom suite with cathedral ceiling. The loft, with balcony overlooking the living room and dining room, comprises a bedroom, full bath and generous closets. The Bradford also includes a patio, garage and an optional basement.

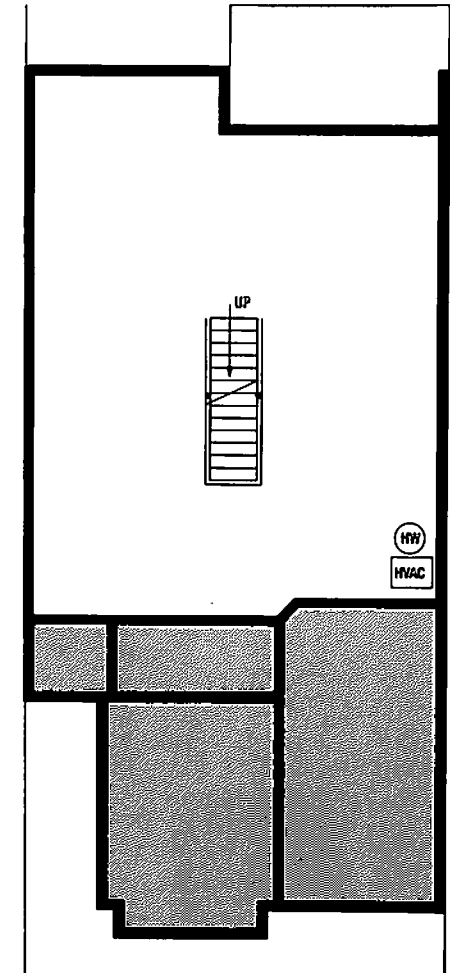
# The Bradford



### Square Footage

1st Floor	1230sf
2nd Floor	520sf
<b>Total Living</b>	<b>1750sf</b>
with garage add	213sf
with basement add	952sf

Totals are approximate



BASEMENT  
 SLAB

Elevations and landscaping are artist conceptions only. Contracts take precedence over artwork. Room sizes are approximate and subject to field variations. Floor plans vary slightly with alternate elevations. Contents subject to errors and omissions.