

it's the perfect time to discover...

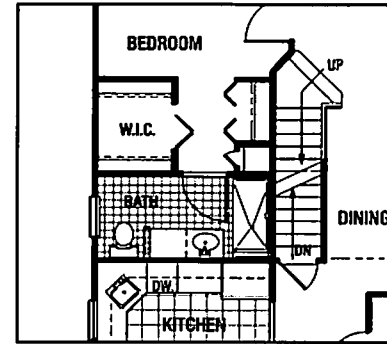
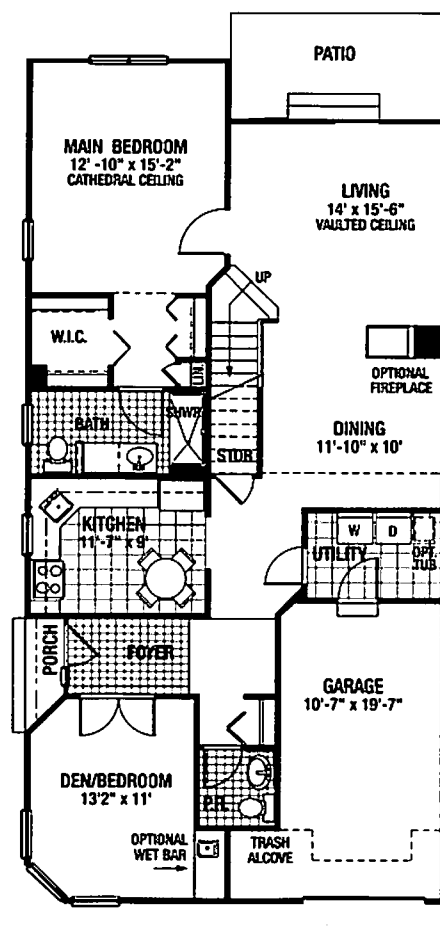
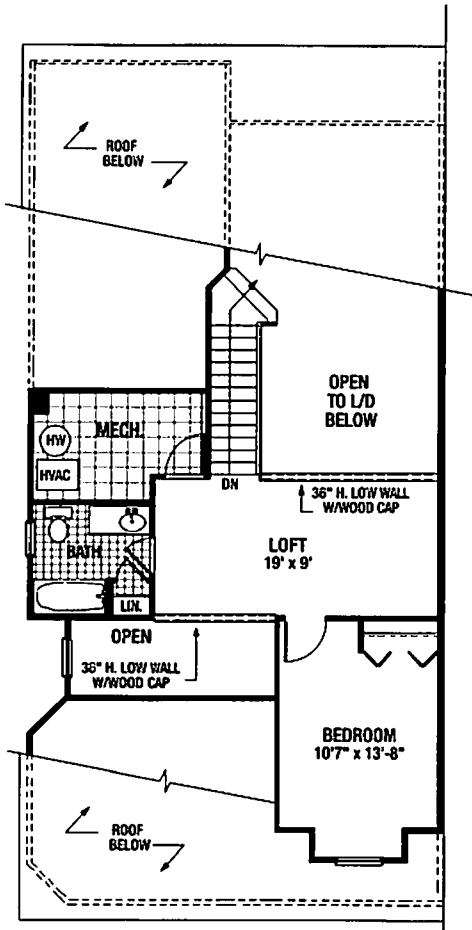
IVYGREENE at Northampton



The Claridge

Experience a lifestyle of luxury in the captivating Claridge. Beautifully designed with custom details including vaulted ceilings and a balcony overlook, the flowing floor plan offers generous space for entertaining and a den for quiet relaxation. Other amenities include a powder room with pedestal sink, a convenient first floor main suite with private bath, cathedral ceiling and generous closets. A second floor includes a guest bedroom, full bath, loft and storage area. A patio, garage and optional basement are included.

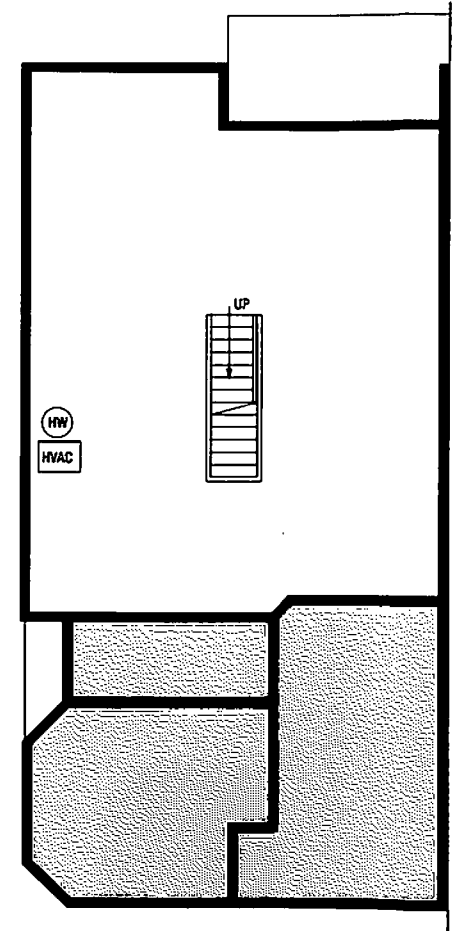
The Claridge



Square Footage

1st Floor	1264SF
2nd Floor	500SF
Total Living	1764SF
with garage add	231SF
with basement add	952SF

Totals are approximate



SLAB

Elevations and landscaping are artist conceptions only. Contracts take precedence over artwork. Room sizes are approximate and subject to field variations. Floor plans vary slightly with alternate elevations. Contents subject to errors and omissions.