

it's the perfect time to discover...

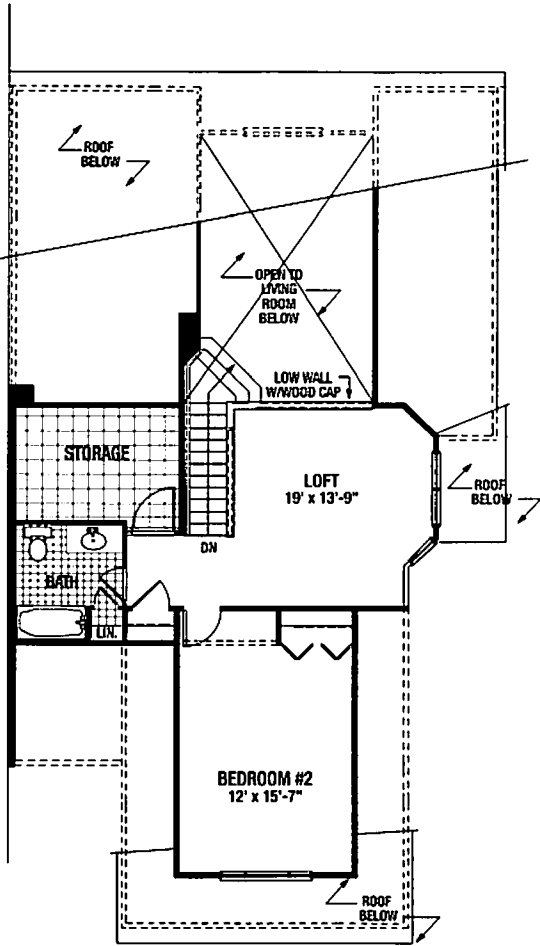
IVYGREENE at Northampton



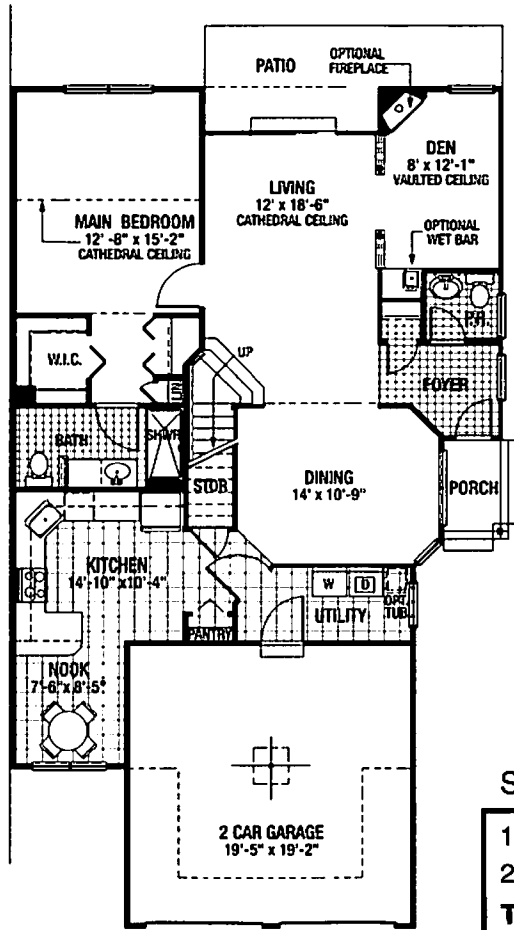
The Danford

Architecturally rich and elegantly designed, the spacious Danford is spectacular with a bright and open floor plan and abundant luxurious details. The first floor offers generous space including a gourmet kitchen, with breakfast nook, living room with volume ceiling and adjoining den, separate dining room, powder room with pedestal sink, and main suite and bath. Upstairs is a guest bedroom and full bath, a loft with balcony overlook and plenty of storage space. Other amenities include a patio, two-car garage and optional basement.

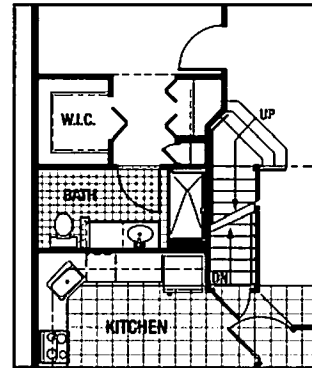
The Danford



LOFT PLAN



FIRST FLOOR PLAN

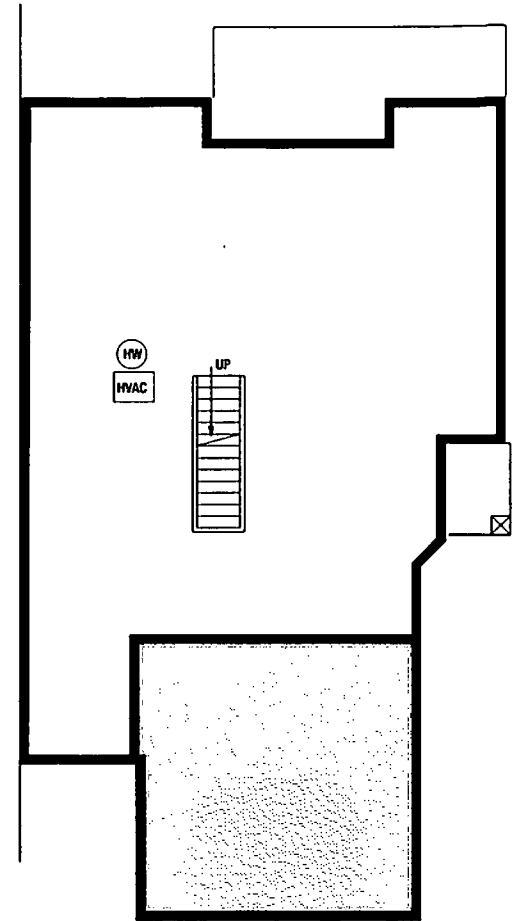


FIRST FLOOR PLAN WITH OPT. BASEMENT

Square Footage

1st Floor.....	1265SF
2nd Floor.....	685SF
Total Living.....	1950SF
with garage add.....	395SF
with basement add..	1210SF

Totals are approximate



BASEMENT
 SLAB

Elevations and landscaping are artist conceptions only. Contracts take precedence over artwork. Room sizes are approximate and subject to field variations. Floor plans vary slightly with alternate elevations. Contents subject to errors and omissions.